

Like their owners, many cats have a sense of humor. They understand the irony of being pampered, and they will often play up to their owners. A cat may bring a toy mouse to you, only to drop it on the floor. Or a cat may bring a toy mouse to you, only to drop it on the floor. Or a cat may bring a toy mouse to you, only to drop it on the floor.



Most of us have a soft spot for what Shakespeare called the 'harmless necessary cat'. A multitude of people favour cats above all other pets: felines adorn one in five British homes. But unlike other domestic animals, the cat has been famed on its own terms, and for centuries it has staked a unique claim in the human imagination: sometimes worshipped, at other times persecuted. Although no longer sacred, the cat's independent yet loyal personality, combined with its elegant and smooth agility, have made it a much-loved pet-about-the-hearth.

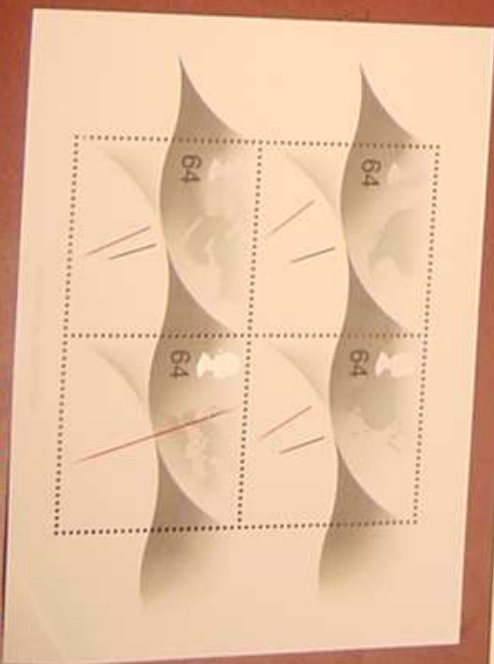


MILLENNIUM TIMEKEEPER

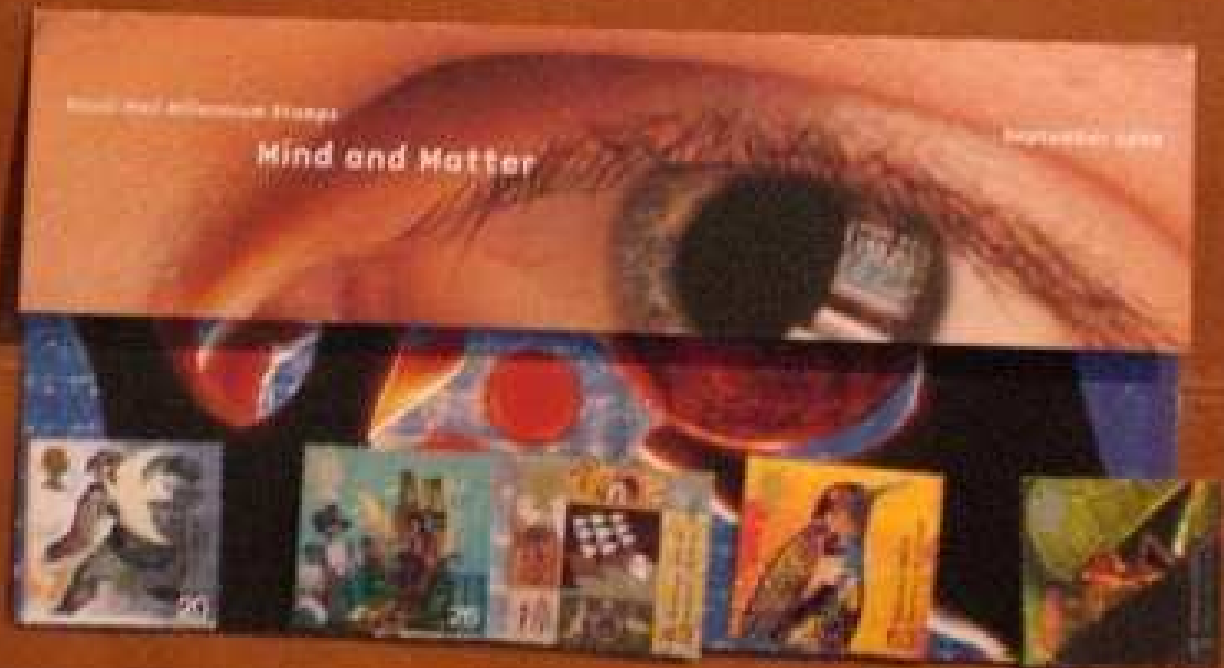
ROYAL MAIL AIRMAIL STAMPS

In their attempt to understand time, we have devised many ways of measuring it. One reality of time was discovered centuries ago – as is one orbit of the Earth around the Sun, rotation of the Earth. In turn, humans have devised their own units to make sense of time – and minutes on a clock-face, the centuries and millennia of history.

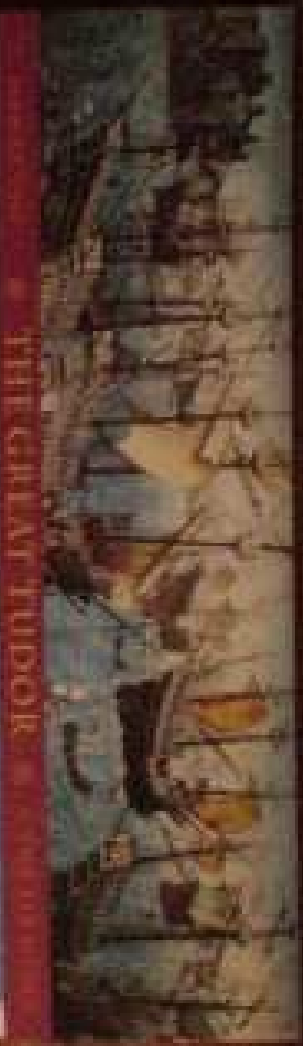
The miniature sheet of Special Stamps commemorates these measurements of time as a new Millennium approaches. The clock-face ever closer to midnight the Year 2000 – which begins for all the world at the Greenwich Meridian.



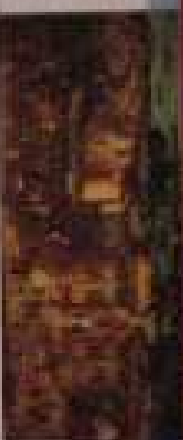
2008 2 26



3/2/2008 15:33



THE GREAT TUDOR



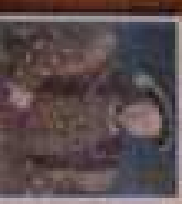
...the Tudors were a family of Welsh descent who rose to power in the 15th century. They were known for their political and military achievements, and for their role in the English Reformation.

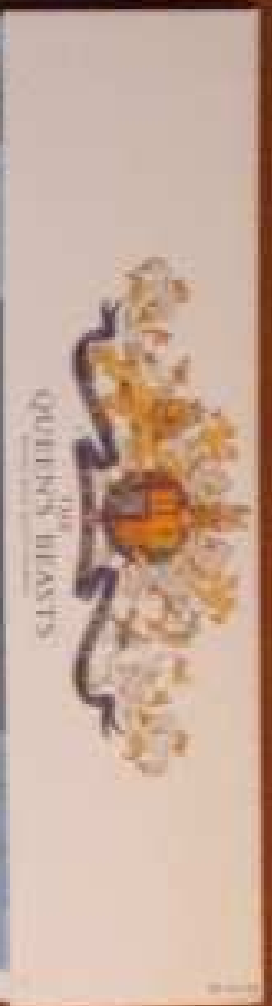
...the Tudors were a family of Welsh descent who rose to power in the 15th century. They were known for their political and military achievements, and for their role in the English Reformation.



THE 500th ANNIVERSARY OF THE INVENTION OF
HERM THE PRINCE OF WALES

...the Tudors were a family of Welsh descent who rose to power in the 15th century. They were known for their political and military achievements, and for their role in the English Reformation.





The Queen's Billys are a unique unit within the Royal Canadian Mounted Police. They are responsible for providing the Queen with a personal bodyguard and ensuring her safety during her travels. The unit is composed of highly trained and experienced officers who are dedicated to their duty.

The Queen's Billys are a unique unit within the Royal Canadian Mounted Police. They are responsible for providing the Queen with a personal bodyguard and ensuring her safety during her travels. The unit is composed of highly trained and experienced officers who are dedicated to their duty.



EPR
 Equine Professional Register
All The Queen's Horses

The Equine Professional Register (EPR) is a professional body for equine practitioners. It was established in 2004 and is the only organization in the world to regulate the equine profession. The EPR is committed to ensuring the highest standards of care for horses and ponies.

The EPR is a professional body for equine practitioners. It was established in 2004 and is the only organization in the world to regulate the equine profession. The EPR is committed to ensuring the highest standards of care for horses and ponies.



3/2/2008 15:36

edward

Edward & Sophie

The Royal Wedding: The Prince of Wales and Miss Sophie Jones

by Andrew Davies, Screenplay by Jeffrey Gurney



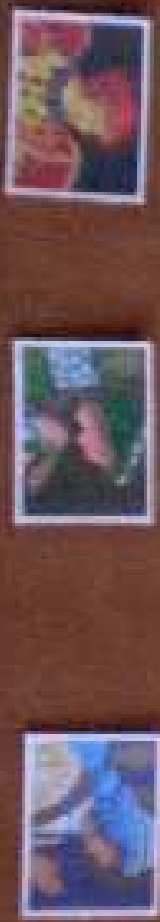
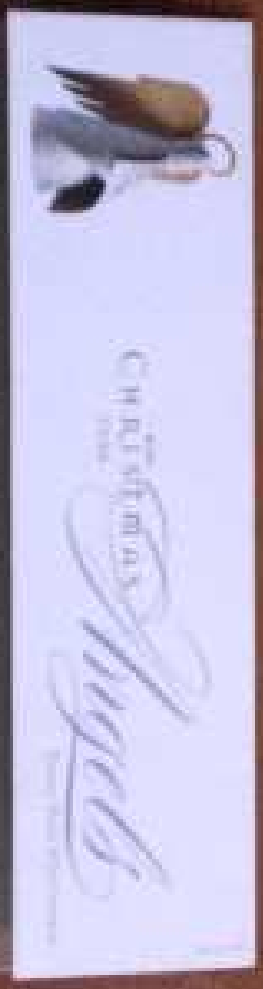
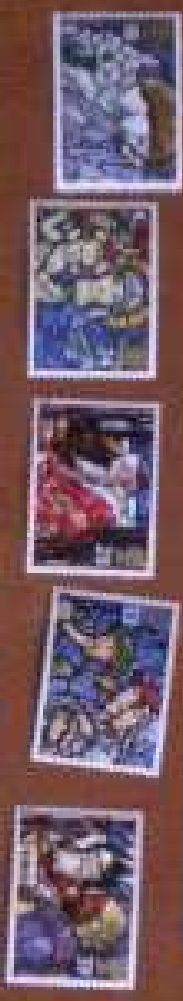
Special Mail 100p Stamp

St George's

chapel

The wedding of His Royal Highness The Prince Edward, EWO and Miss Sophie Jones takes place in St George's Chapel, Windsor, on Saturday 19 June 1999. The choice of St George's Chapel for the wedding is the scene of hundreds of royal weddings and some of the most important moments in British history. It will be of special significance to the nation.

812/2008 15:37



3/2/2008 15:39

ST AUGUSTINE AND ST COLUMBA
MISSIONS OF FAITH
1994



CHRISTMAS 1994
THE CHRISTMAS SEASON

It is a privilege to present this special Christmas album, featuring the finest Christmas stamps from around the world. Each stamp is a work of art, capturing the spirit of the season in a unique and beautiful way. We hope you will enjoy this collection as much as we enjoyed putting it together.



8/21/2008 15:40

Christmas, 1913 at the St. Mary's Park




The problems of the world are not solved by force and the power of the sword, but by the power of love and the power of the cross.



Christmas at St. Mary's



3/2/2008 15:42

COMMUNICATIONS



...the progress with which the world has advanced, the progress of human
...have been possible to tell a story. The past only
...of his fortunate good people, and his people
...the world to the world.



2008 15:43

POST
ROYAL MAIL MINT STAMPS



CARD
FOR ADDRESS ONLY

*Victorial Postcards
1894 - 1994*

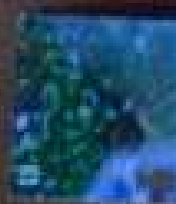
*Mrs B Robinson
200 Marmalade Road*



3/2/2008 15:44



2008-1008 15:46



3/2/2008 15:46

20TH CENTURY WOMEN OF ACHIEVEMENT PORTRAITS OF GENIUS

SERIAL KILLER PAINT STRIPS



Women of Achievement: the 20th century record thousands of British heroines fighting the elements have always been achieved. In their work. The brilliant and sculptor would have gone into advanced by a close circle of sportsmen.



FRINK



celebration this year. The history of us over the last 20 centuries. Modern times. Despite all odds, women say in the scope and recognition of a time in Victorian times, but the it. The situation might have been subtle or institutional eye. The conditions would never have



PAURIER



likely commemorated have made outstanding achievements in their fields. This is one who have died in the last decade, these sources also celebrate changes in the lives of women in our time.

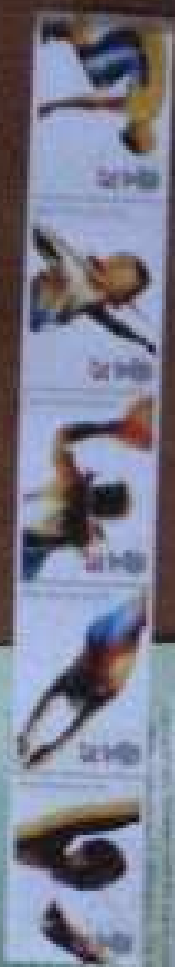


3/2/2008







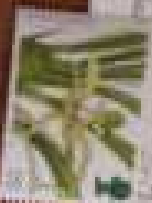
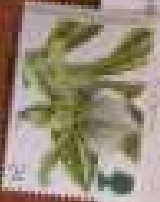
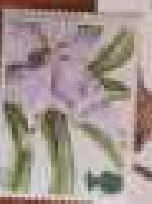

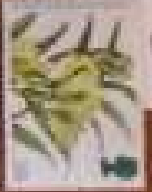
9/2/2008 15:16



3/2/2008 15:18



Greetings & Stamps

The most popular of the genus of iris, iris is a perennial herbaceous plant. It is native to the Mediterranean region and is now cultivated in many parts of the world. The iris is a member of the Iridaceae family. It is a member of the genus Iris, which is a member of the subgenus Iris. The iris is a member of the subgenus Iris, which is a member of the subgenus Iris.

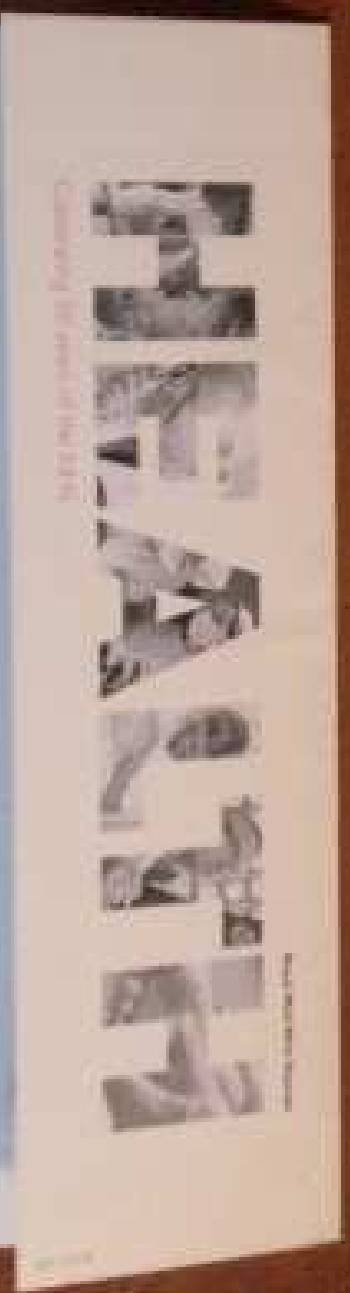
Perennials

been especially designed to enhance the sense of occasion
 convey their own
 markers in our lives





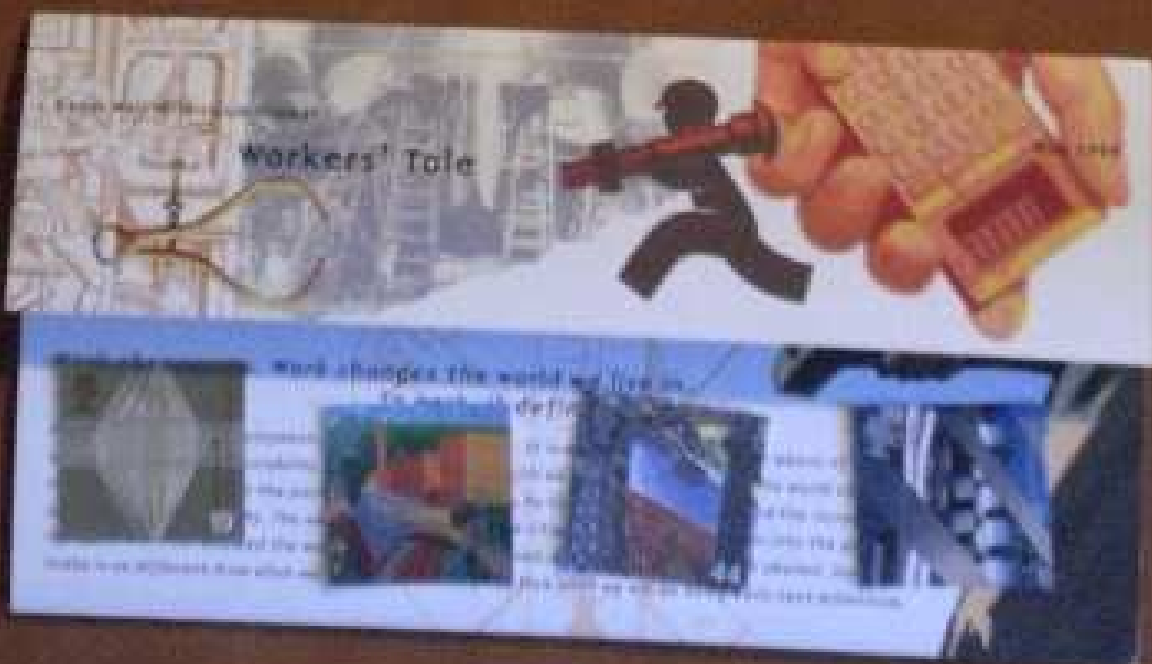
3/2/2008 15:26



8/21/2019 5:27



3/12/2008 15:28



3/2/2008 15:30



8/2/2008 15:31

